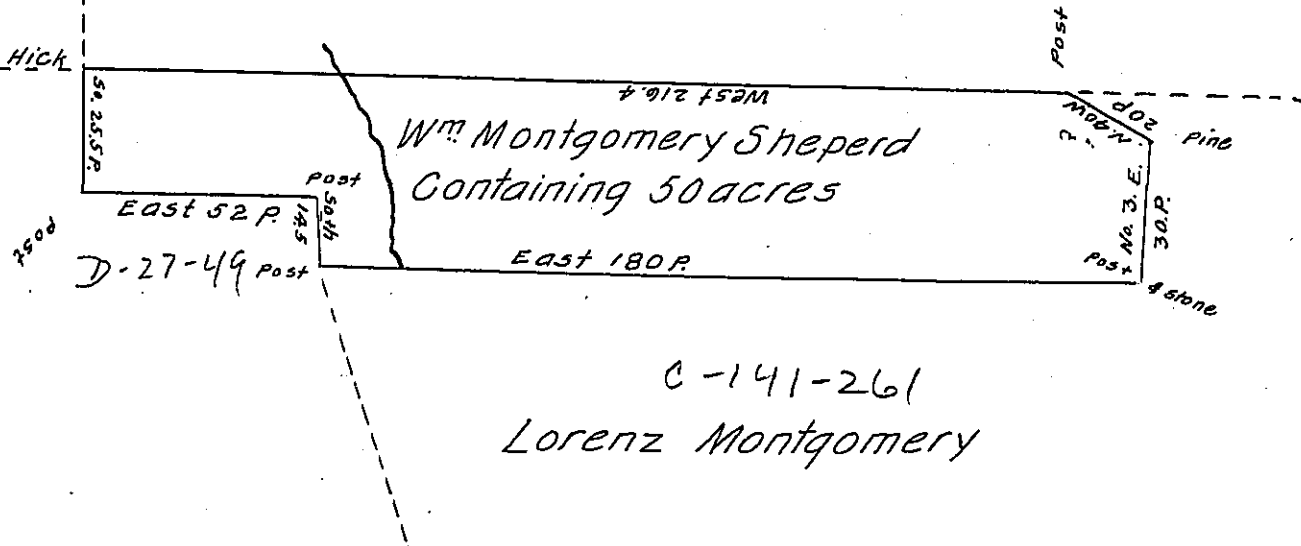


5453

5452



C-141-261
Lorenz Montgomery

A Draught of a tract of Land Situate in Gibson township in the County of Elk. Surveyed June 25th 1856 for W^m Montgomery Sheperd. By Virtue of his Warrant bearing date May 17th 1849. Containing fifty acres with the allowance of six per Cent for road &c.

To J. Porter Brawley Esq. }
Surveyor General }

Georg F. Schaefer C.S.
for Elk Co.

IN TESTIMONY that the above is a copy of the original remaining on file in the Department of Internal Affairs of Pennsylvania, made conformably to an Act of Assembly approved the 16th day of February, 1833, I have hereunto set my Hand and caused the Seal of said Department to be affixed at Harrisburg, this fourteenth day of November 1907.

Henry Howell
Secretary of Internal Affairs.